



User Manual

Before you begin

- Please unpack the box carefully and identify that all the parts are present.
- Please bear in mind the following points when choosing a mounting position.
 - > The camera must be positioned so that it will not point directly into the sun (sunrise and sunset) or any bright light, as this may cause damage to the camera
 - > Avoid viewing areas where half the area is in bright sunlight and the other half is dark, such as in the shadow of a building. All types of cameras have difficulty in 'seeing' with such a large lux level variation.
- Do not cut the camera cables, this will void the warranty.
- Make sure you use only the recommended power supply. Damage caused to the camera by incorrect voltage or wiring is not covered by the warranty.

Model: **XPD700WIR-2**
700 TVL Vandal Resistant Dome
with 40m IR, DNR and WDR

Contents

1. Safety Precautions	3
2. Product Description	4
3. Features	4
4. Contents	4
5. Installation	5
6. Camera OSD Control	7
7. OSD Menu Structure	7
8. SETUP Menu Functions	9
8.1 Lens	8
8.2 Shutter/AGC	8
8.3 White Balance	8
8.4 Backlight	10
8.5 Picture Adjust	10
8.6 ATR	11
8.7 Motion Detection	11
8.8 Day/Night	12
8.9 Noise Reduction	12
8.10 Camera ID	13
8.11 Sync	13
8.12 Language	13
8.13 Camera Reset	13

Thank you for purchasing this Xvision camera. Before operating this product, please read this instruction manual carefully.

1. Safety Precautions



CAUTION
RISK OF ELECTRIC SHOCK.
DO NOT OPEN!



CAUTION: TO REDUCE THE RISK OF ELECTRIC SHOCK, DO NOT OPEN COVERS UNLESS MAKING LENS ADJUSTMENTS. NO USER SERVICEABLE PARTS INSIDE. REFER SERVICING TO QUALIFIED SERVICE PERSONNEL.

- Do not disassemble or modify the camera. Please refer repairs or service to a qualified service technician.
- Take care when installing the camera. Avoid scratching the front glass window.
- Avoid shock and vibration. Do not install the camera on an unstable surface. It can be damaged by improper use or storage.
- Do not attempt to point the camera at the sun or other extremely bright objects. It can cause image smearing whether the camera is powered on or not and can lead to the damage of the CCD (Charge Coupled Device).
- When camera is installed next to equipment, such as wireless communication device, that emits a strong electromagnetic field, some irregularity such as noise on the monitor screen may occur.
- Operating temperature: $-10^{\circ} \sim +45^{\circ}\text{C}$
- Provide ample slack in the video and power cables once the camera is installed in its final position.
- Request the service of a qualified technician if the camera malfunctions or generates excessive amounts of heat.

2. Product Description

The XPD700WIR-2 is a professional CCTV dome camera that has excellent colour balance and a high resolution 700 TVL image, resulting in natural colours and super sharp images.

The camera is equipped with high power Infrared (IR) LEDs offering 40m nightvision in complete darkness and split glass technology that eliminates any IR bounceback.

It features a powerful ARM based DSP, which processes the image in real time and improves it by using Digital Noise Reduction and Wide Dynamic Range to produce an even image, that does not suffer from bright or dark spots. Further enhancing the picture is a megapixel lens, which is fully adjustable, allowing you to select the perfect viewing angle for your application. The camera also features an On Screen Display (OSD) that allows the user to fully customise the advanced features to its environment.

The XPD700WIR-2 is designed for internal or external use and can be wall or ceiling mounted.

3. Features

4

- 700 TVL high resolution colour image
- Sony 1/3" Ultra High Resolution CCD Sensor with an Xvision X7 DSP.
- Integrated Long Life Infra Red LEDs turn on automatically in low light conditions or complete darkness and provide up to 40 metres
- 2.8 to 11mm Varifocal Auto Iris Lens for 26 to 92° viewing angle for super sharp images and easy selection of the optimum viewing angle during installation.
- Smart DNR (Digital Noise Reduction) reduces the noise on the image when viewing in low lux environments (like at night). This reduces the size of the image when being recorded by a DVR, resulting in a saving of disk space.
- WDR (Wide Dynamic Range) feature allows the camera to display balanced pictures even when the scene being watched has bright spots or various light levels and back light conditions.
- On Screen Display menu for complete customisation of advanced features.
- Designed for wall/ceiling mounting and is suitable for internal or external use.

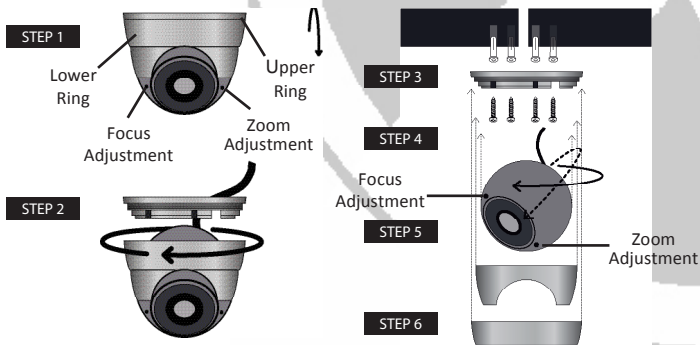
4. Contents

- XPD700WIR-2 Camera
- User Manual
- Screws & Wall Plugs
- Allen Key

5. Installation

1. Select a suitable position on the wall or ceiling to install the camera. Take the mounting bracket off the dome camera by unscrewing the fixing screw using the small Allen key supplied.
2. Rotate the upper ring of the camera, it will unscrew from the dome base. Be careful when handling the camera as the parts are not fixed to the upper ring or the camera 'ball'.
3. Using the Dome base as a guide, drill a hole in the middle of the base circle on the wall or ceiling where the camera is to be mounted, to allow the power and video cable to be fed through (as shown in the diagram).
4. Screw the Dome base to the wall or ceiling using the Wall Plugs and screws supplied.
5. Feed the Camera's cable through the hole and adjust the Camera 'ball' so the camera is positioned in the correct direction and at the correct angle.
6. When the camera is in the correct position, put the upper and lower ring of the camera back into position.
7. Screw the upper ring back onto the base and re-attach the fixing screw to secure the camera in place.
8. The camera's focus and zoom can then be adjusted using the 2 adjustment screws on the front of the camera.

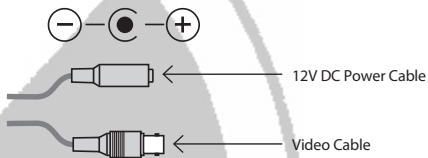
5



5. Installation continued

CONNECT THE POWER & VIDEO CABLES

1. Connect the video output to the monitor or other video device through a 75 Ohms type coaxial cable.
2. Connect the power source, insert the AC plug into the AC socket and the DC plug into the DC Jack (+12V DC in jack centre).

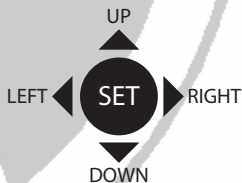


6

6. Camera OSD Control

Various camera settings can be adjusted using the OSD button located on the camera's cable.

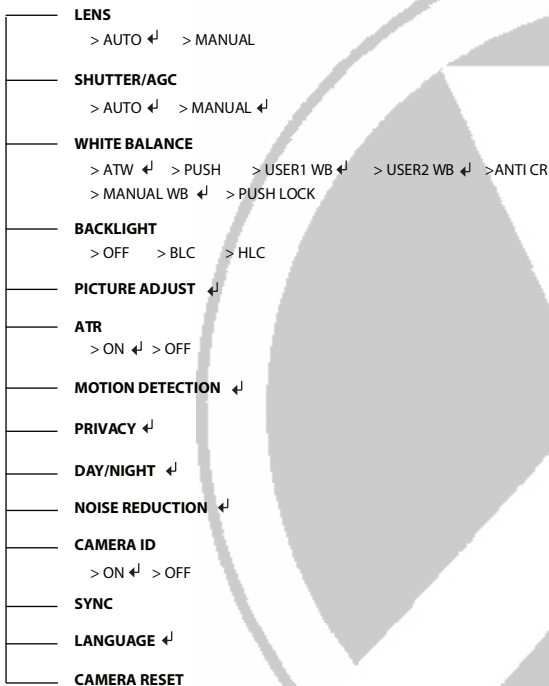
Press the SET button to enter the OSD Menu.



OSD Button Control Actions

Press these controls	For this Action
UP, DOWN	Select between items in a list
LEFT, RIGHT	Select a menu item to change its settings
SET (MENU)	Call up the OSD Menu/ Access a Sub Menu

7. OSD Menu Structure



7

Please Note:

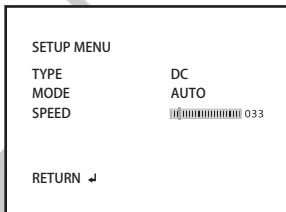
- The arrow symbol on the OSD menu ↵ indicates that there is a sub-menu available. You can enter the sub-menu by pressing the SET (Menu) button.
- **RETURN:** allows the user to return back to the previous menu.
- **NEXT:** allows the user to move to page 2 of the main menu.
- **BACK:** allows the user to return to page 1 of the main menu.
- **EXIT:** allows the user to exit out of the main menu completely.
- **SAVE ALL:** allows the user to save all the current settings.

8. SETUP Menu Functions

8.1. LENS

<Option : AUTO / MANUAL>

Select the iris aperture control method between 'AUTO' and 'MANUAL' by pressing LEFT or RIGHT button. When 'AUTO' is selected, you can press the setting button to enter its submenu.



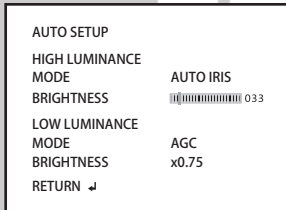
- 'TYPE' lets you select between DC iris and video iris. However, video iris mode is not supported on this camera. For the item 'MODE', you can select 'AUTO' to let the camera automatically adjust the diameter of aperture. You can also set the camera to open the aperture to the maximum degree, or use the minimum aperture. The 'SPEED' item allows you to set aperture adjustment speed.

8

8.2. SHUTTER/AGC

<Option : AUTO / MANUAL>

Allows you to configure the shutter speed and the AGC.

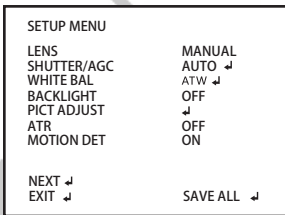


- Selecting 'AUTO', which is recommended when using a DC-iris lens, will allow the camera to adjust shutter speed automatically based on the lighting conditions. Configure the function under different lighting conditions in the submenu of 'AUTO'.
- Under 'HIGH LUMINANCE', you can choose 'AUTO IRIS' mode (default setting) to use a fixed shutter while making the camera adjust iris level according to the brightness of the scene. Choose 'SHUT+AUTO IRIS' mode to have the camera adjust iris level according to the brightness, and control the exposure with DC iris.

8. SETUP Menu Functions continued

8.4. BACKLIGHT <Option : OFF / BLC / HLC>

This function allows the user to adjust advanced backlight settings, giving the following options:

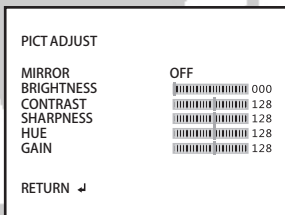


- OFF: Turns the BLC function off
- BLC: The BLC function makes objects in front of a bright scene (such as a window on a bright sunny day) clearer to see by increasing their brightness and making the background darker.
- HLC: Select this feature to select masking of bright areas in the image, such as when viewing number plates when car headlights are on.

10

8.5. PICTURE ADJUST

Adjust various settings to sharpen the camera image.

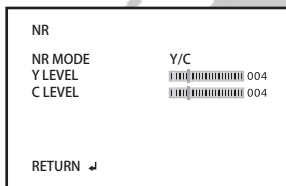


- MIRROR: Provides a mirror reflection (horizontal) of the image.
- BRIGHTNESS: Adjust the brightness of the image (0-255)
- CONTRAST: Adjust the contrast of the image (0-255)
- SHARPNESS: Adjust the sharpness of the image (0-255)
- HUE: Adjust the hue of the image (0-255)
- GAIN: Adjust the gain of the image (0-255)

8. SETUP Menu Functions continued

8.10. Noise Reduction

Here you can configure the 2D digital noise reduction function (default: off). Its submenu includes 3 noise reduction mode: 'Y', 'C', and 'Y/C'. Select any of the three NR modes, highlight the Y or C level, and then press the LEFT/RIGHT button to adjust the slider for Y level (brightness signal) or C level (color signal return).



8.11. CAMERA ID

You can create a camera title to be displayed on the screen. Switch to 'ON' and press the setting button to input a custom title. The camera title can be named with up to 52 characters in two lines. Highlight and select 'POS' to move the title to the preferred position on screen.

13

8.11. SYNCHRONOUS MODE

This function is not used.

8.12. LANGUAGE

Press the LEFT/RIGHT button to change the language of the OSD menu. Available languages include English, Japanese, German, French, Russian, Portuguese, Spanish, and Chinese.

8.13. CAMERA RESET

Resets all settings to the factory default.

Specifications

Model:	XPD700WIR-2
Picture Type:	Day/Night (B/W & Colour)
Image Sensor:	Sony 1/3" Ultra High Resolution CCD
DSP:	Xvision X7 DSP
Resolution:	700 TVL
Lens Viewing Angle:	26 to 92°
Infra Red Night Vision:	40 metres
Minimum Illumination:	0 Lux (IR on)
Audio:	No
Operating Voltage:	12V DC 400mA
Suggested Power Supply:	12V DC 1250mA
Mounting:	Wall/Ceiling
Weatherproofing:	Yes
Dimensions (WxH):	119x 100 mm
Weight:	0.62 Kg

14

TECHNICAL SUPPORT:

For Technical Support for any Xvision product please contact your local distributor.

LIMITED WARRANTY:

This product is supplied with a 1 Year warranty.

The Warranty excludes:

Products that have been misused, (including accidental damage) and damage caused by normal wear and tear. In the unlikely event that you encounter a problem with this product, it should be returned to the place of purchase.

Manufactured exclusively for Xvision - www.xvision.com



Head Office
Xvision Group (UK)
Unit 2, Valley Point, Beddington Farm Road,
Croydon, Surrey CR0 4WP
E: sales@xvision.com

Far East Office
Kyoung Am Building,
157-27 Samsung-dong
Kangnam-ku, 135 090 Seoul, Korea
E: globalsales@xvision.com