

CMS USER'S MANUAL

VER: 1.0

2009-1-6

INDEX

INDEX	2
Preface	3
1. Introduction	4
2. Install and uninstall CMS	4
2.1 System requirement	4
2.2 Computer Hardware Requirements	5
2.3 Process of Installation	5
2.4 Remove the Software	7
3. Login and exit	8
3.1 Login	8
3.2 Exit.....	9
4. Functions and operations.....	10
4.1 Basic function	10
4.1.1 Lock & Unlock.....	10
4.1.2 Minimize & Maximize	10
4.1.3 Alarm Display.....	10
4.1.4 Camera Display List	11
4.2 Preview.....	12
4.2.1 Preview Locale.....	13
4.2.2 PTZ configuration	15
4.2.3 Video Set	16
4.3 Remote System Configuration.....	17
4.3.1 Device manager.....	17
4.3.2 Local configuration	21
4.3.3 Server Configuration	25
4.3.4 E-map	25
4.3.5 User Manager.....	28
4.4 Video Search	31
4.4.1 Video playback	32
4.4.2 Video backup.....	33

Preface

Central management software (short for CMS below) is a typical client management program whose main function is to centralize all devices together and realize the unified management of parameters and authorization, which is greatly improve the efficiency of control and operation to all embedded digital video recorders and network video servers as well as software compressed cards connected through the network.

This manual will help you to familiarize with the software and master its operation methods.

Notice:

- As product update, the contents of this manual are subject to change without notice.
- Some part functions and symbols may not be completely same with what you get due to the continuous revision of this software.

1.Introduction

Central Management Software is a client procedure designed specially for embedded digital video recorders, network video servers and software compressed cards to realize remote centralized management. In the video surveillance system, the administrator can control video input devices and conduct all possible rights such as setting up cameras, PTZ, etc through configuring parameters, viewing the live site to achieve the purpose of live site surveillance, video record and record file backup and so on. It possesses three main functions: preview the live site, system configuration and video search, which will be presented specifically in the third function part.

2.Install and uninstall CMS

2.1 System requirement

- Supported Operating System:

Operating system	Comments
Windows XP	Windows XP SP2 or most updated patch, Direct 9.0c or the higher
Windows 2000	Windows 2000 SP4, Direct 9.0c or the higher
Windows Vista	Windows Vista Direct 10.0c or the higher

Note: Windows 2003 series.

- Supported Browser

Operating system	Comments
Microsoft Internet Explorer v6.0	IE 6.0 with most updated service pack
Microsoft Internet Explorer v7.0,	IE 7.0 with most updated service pack

2.2 Computer Hardware Requirements

To ensure the software running well, please make sure the computer is compatible.

- Recommended PC Specification – 4 channels

Item	Specification
CPU	Intel Pentium 3.0 GHz or AMD 3000+
Memory	1GB
HDD	160GB

- Recommended PC Specification -8 channels:

Item	Specification
CPU	Intel Core 2 Duo 1.8 GHz or AMD Dual core 3800+
Memory	1GB
HDD	250GB

- Recommended PC Specification -16 channels:

Item	Specification
CPU	Intel Core 2 Duo 2.2 GHz or AMD Dual core 3800+
Memory	2GB
HDD	250GB

Note:

- The upper recommended specification aims at CIF real-time resolution.
- The AMD chip hyper-3800+ and X64 series are not tested;
- If user wants to have real-time live view with CIF resolution, the max connection number is 16 in one computer according to the current capacity;
- If user wants to have real-time live view with D1 resolution, the max connection number is 4 in one computer.

2.3 Process of Installation

- a) Before to install central management software in your computer, please make sure all the anti-virus software in your computer closed so that the control center program can install correctly in your

computer. In addition, the setting of your IE browser must enable the download of activeX control.

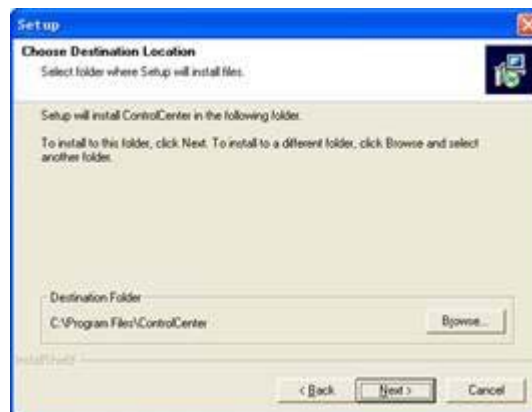
- b) Run the “Control Center” from software CD, the next menu will pop up;

Figure2-2 Welcome menu



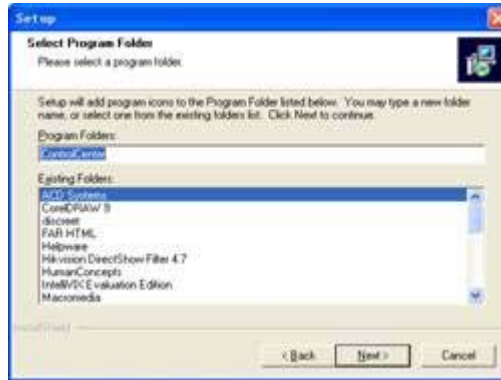
Click “Next” to enter the next step;

Figure2-3 Choose the installation destination



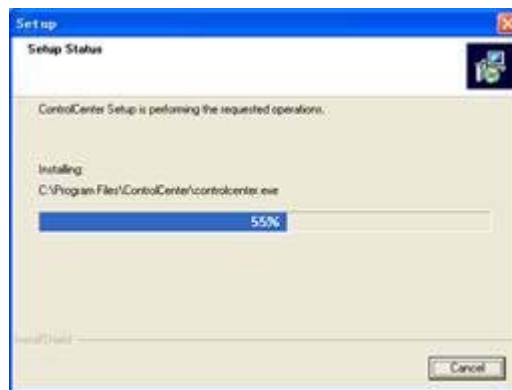
The default installation destination folder is “C:\Program Files”, user could click “Browser” button to change it. After selecting the destination, click “Next” to enter the next step.

Figure2-4 Type a new folder name or select an existing folder to install



Click “Next” to start installing;

Figure2-5 The rate of installation progress



The installation is completed.

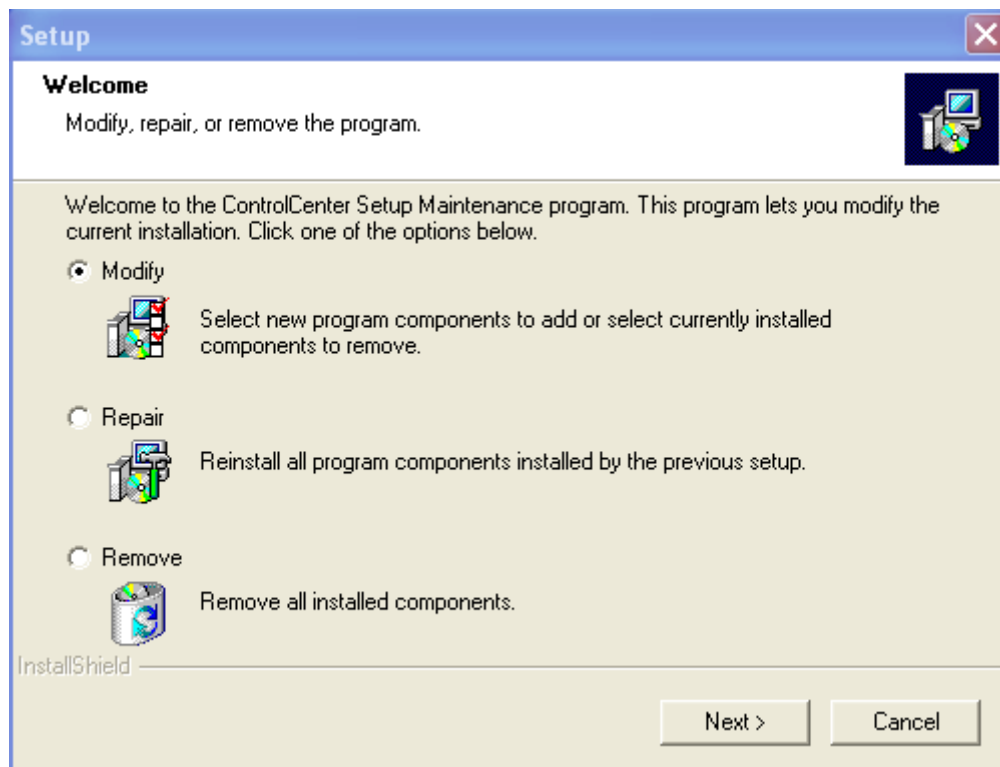
Figure2-6 Completed menu



2.4 Remove the Software

There are two methods to remove the software. One method to uninstall the software is like all other software. Users shall enter the removal interface and then

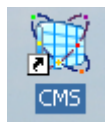
click 'remove" to uninstall this control center. The other way is to click the setup icon, and then a window shown below will pop up, users select "Remove" to dismantle this software. After Removed, the computer system will reboot automatically.



3.Login and exit

3.1 Login

After building Network Video Surveillance System and installing the Control Center program, user need login the Control Center to set parameters and watch the locale. Steps of login are described as below:



Double-click icon on the desktop, it will pop up 'Login' dialog box, referred to

Figure1.

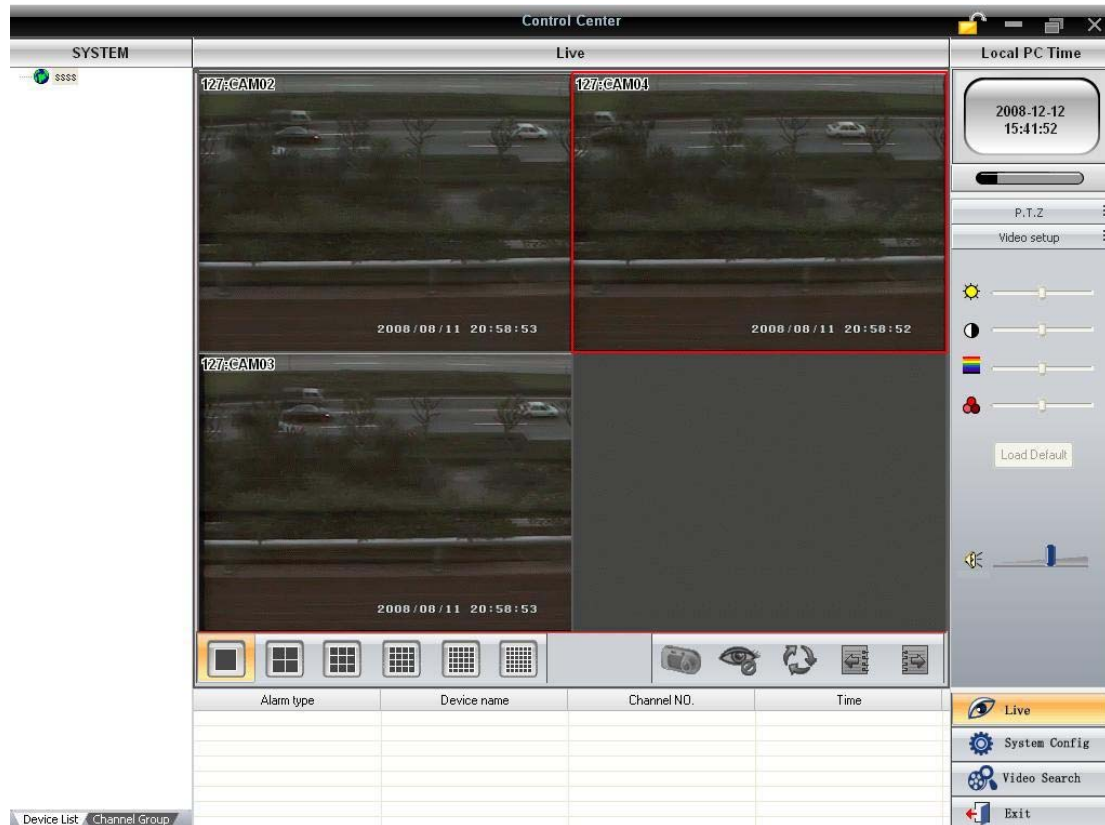
Figure 1



Input username and password on 'Login' dialog box. The default original username is SYSTEM and password is 123456.

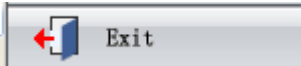
Click 'OK' button to enter the Control Center. The Control Center Operation Interface is shown as Figure2.

Figure 2



3.2 Exit

There are two ways to exit control center normally.

Firstly, please click  button, and then an inquiry dialogue will pop up. If you confirm to exit, please click "yes", the system will close.

Secondly, user can click  button to exit.

4.Functions and operations

In this chapter we will divide four parts to instruct the functions and specific operations of this software. Users can enter the control center to watch locale through Internet, to set parameters, to enable the record, to playback the record files, and to backup the record and so on.

Main Function List:

- Basic Function
- Preview
- Remote System Config
- Video Search

4.1 Basic function

After entering the Control Center, users can operate following functions. The operation methods are described as below:

4.1.1 Lock & Unlock



'Lock & Unlock' button.





expresses the Operation Interface is on 'Unlock' status.



expresses the Operation Interface is on 'Lock' status.

User could lock current operation interface. When current operation interface is on 'Lock' status and user need to operate the Control Center, he needs input username and password on 'Login' dialog box to unlock the Control Center Operation Interface. The Control Center Operation Interface which user could operate is on 'Unlock' status.

4.1.2 Minimize & Maximize

Click  to maximize 'Control Center' window. Click  to minimize 'Control Center' window or revert the 'Control Center' to original size.

4.1.3 Alarm Display

In the alarm display item, all the alarm information will be displayed. It mainly includes: Alarm Type, Device Name, Camera Number and Alarm Time as well as

video lose, motion and so on. Alarm Display List is shown as Figure1.

Figure1

Alarm type	Device name	Channel NO.	Time
Stop Motion Alarm	tc201	CAM1	2009-12-13 09:39:33
Motion Alarm	tc201	CAM1	2009-12-13 09:39:12
Stop Motion Alarm	tc201	CAM1	2009-12-13 09:37:02
Motion Alarm	tc201	CAM1	2009-12-13 09:36:42

4.1.4 Camera Display List

Camera Display List is used to display all devices added. User may Click 'Device List' or 'Camera Group' page to switch display mode.

Figure2 displayed the DVS aligned according device list. User may drag device in the Device List to Operation area for watching the locale. Figure3 displayed the DVS aligned according camera list. User may drag the group to Operation area for watching all camera of this group.

Figure2 Device list




Figure3 Camera group



If user needs add region, group or device, please refer 'Device Manager ' to add.

Notice:

Before switching the display mode, user needs click  button firstly and then close all preview pictures.

4.2 Preview

On Menu area, after clicking 'Preview' menu, it will display the locale preview picture on Operation area. Main function of 'Preview' menu contents: Preview Locale, PTZ Configuration and Video Set.




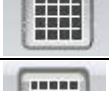





Function List:

- Preview Locale
- PTZ Configuration
- Video Set

4.2.1 Preview Locale

On Operation area, users can select preview mode of locale, select automatic dwell, snap picture and close all previews, etc. Function Buttons of Preview Locale are described as table1.

Table1 Function Buttons & Explanation of Preview Locale

No.	Buttons	Meanings
1		'Single Picture Preview' button. Click this button to watch every camera in single picture preview mode.
2		'4 Picture Preview' button. Click this button to watch every camera in four picture preview mode.
3		'9 Picture Preview' button. Click this button to watch every camera in 9-picture preview mode.
4		'16 Picture Preview' button. Click this button to watch every camera in 16-picture preview mode.
5		'25 Picture Preview' button. Click this button to watch every camera in 25-picture preview mode.
6		'36 Picture Preview' button. Click this button to watch every camera in 36-picture preview mode.
7		'Snap' button. Click this button to snap locale picture of one camera you select. User could snap 10 pictures once at best. Click 'Snap' button to pop up a dialog, referred Figure2.
8		'Close All Preview' button. Click this button to close current locale picture and stop preview. Before switching display mode, user must close all previews first.
9		'Dwell' button. Range of selecting to dwell is from single picture preview mode to 9 picture preview mode. Notice: <ul style="list-style-type: none"> ● Dwell means to display every locale picture according to the sequence of the DVS in Camera Group. ● Only when selecting 'Camera Group' on Camera Display List area and current display mode couldn't display all cameras, 'Dwell' button is enabled. ● It will dwell among the cameras that have locale pictures.

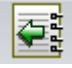
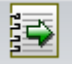
10		<p>'Pre-Group' button. Click this button to display pre-group locale pictures.</p> <p>Notice: If there are some cameras not connecting with locale pictures, please click 'Pre Group' button, they will be also displayed on the screen, but it only displays in blue screen.</p>
11		<p>'Next Group' button. Click this button to display next group locale pictures.</p> <p>Notice: If there are some cameras not connecting with locale pictures, please click 'Next Group' button, and they will also be displayed on the screen, but it only displays in blue screen.</p>

Figure 1 Camera preview

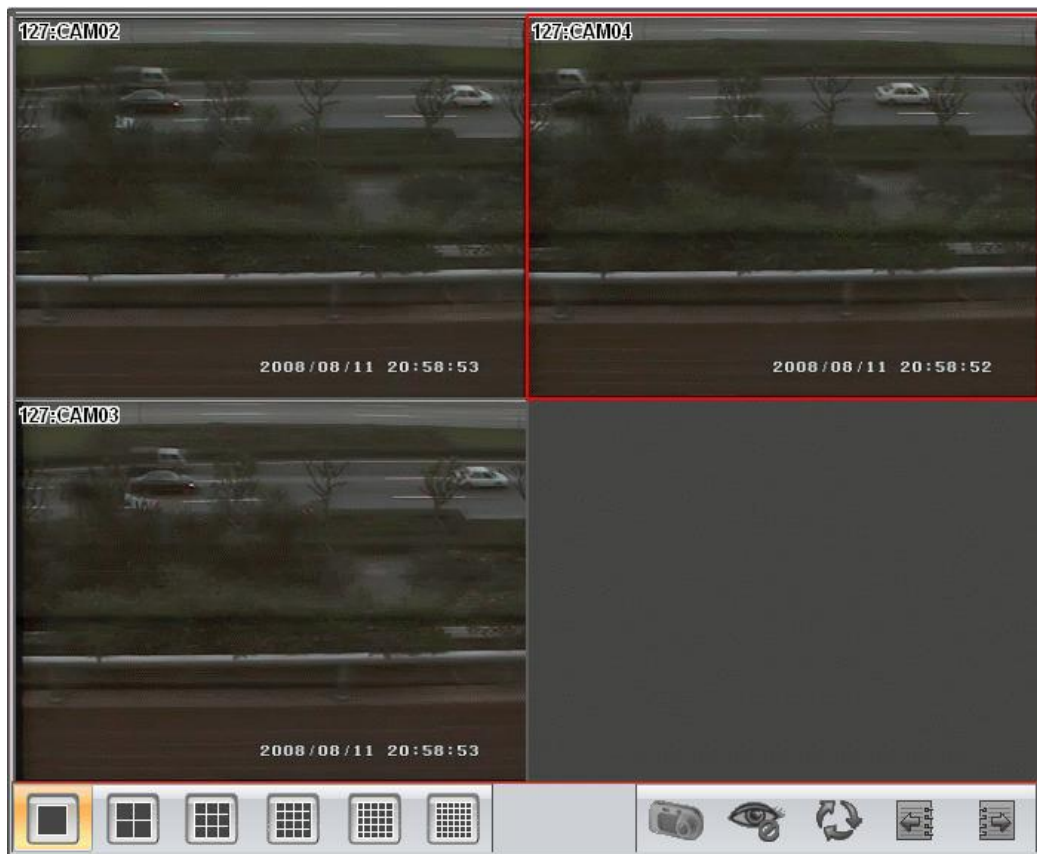
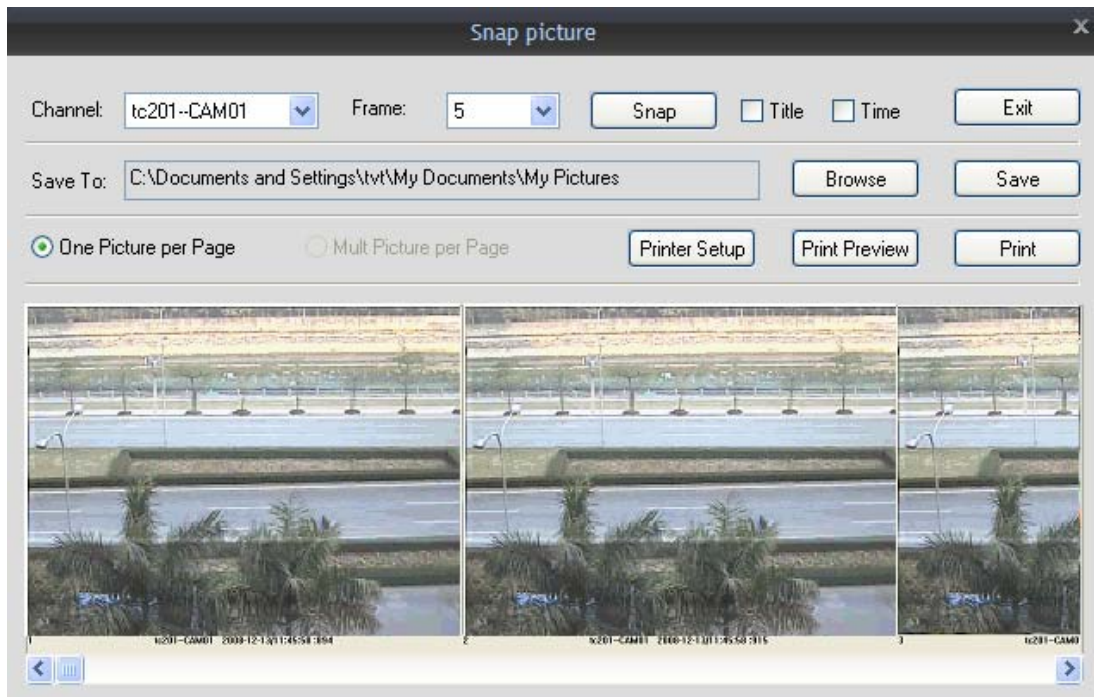


Figure2 "Snap" Dialog Box



4.2.2 PTZ configuration

After connected with dome, user can control the dome on Control Center. User could control the dome up, down, right, left or stop rotating, adjust rotation speed, Iris and zoom, focus on the dome, and set the presets and so on...



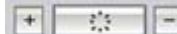

Function List:





- Dome Control
- Preset Setting

4.2.2.1. Dome control

On 'PTZ Configuration' menu, user could control rotation position and speed of the dome. Function buttons of the Dome Control are described as Table1

Table1 Function Buttons & Explanation of PTZ Configuration




No.	Buttons	Meanings
1		▲: means the dome rotate up. ▼: means the dome rotate down. ◀ means the dome rotate left. ▶ means the dome rotate right. ■ means the dome stop rotating.
2		Drag the bar to adjust rotating speed of the dome.
3		'Iris' button. Click + button near 'Iris' button to increase light of the dome. Click - button near 'Iris' button to decrease light of the dome.
4		'Zoom' button. Click + button near 'Zoom' button to zoom in the locale picture of this camera. Click

		 button near 'Zoom' button to zoom out the locale picture of this camera.
5		'Focus' button. Click  button near 'Focus' button to have long focus. Click  button near 'Focus' button

4.2.2.2. Preset setting

Preset means user sets a camera surveillance point for a special position of the locale. When setting the preset, user may adopt function buttons in Table1 of Dome Control to adjust the dome, so that it will display the best picture of locale on Control Center.

- Setting Steps

- Click  button in  item, it will pop up a drag-down list.
- Select the preset which user wants to set in drag-down list.
- Use function buttons in Table1 of Dome Control to adjust the dome.
- Click  button, it will pop up 'Modify Name' dialog box.
- Input the preset name in 'preset' textbox.
- Click 'OK' button to save the preset which you set.

- Parameters Configuration






Parameters and explanation of setting preset refer below table.

Parameters	Meaning	How to Set...
preset	Name of the preset.	Input manually. It could input 11 characters at most.

4.2.3 Video Set

On Video Set menu, user could set the quality of locale picture. Function buttons of the Video Set are described as below Table1.

Table 1 Function Buttons & Explanations of Video Set

No.	Buttons	Meanings
1		Brightness adjustment
2		Contrast adjustment
3		Saturation adjustment
4		Hue adjustment
5		Sound adjustment

Notice:

Click 'Default' button to resume the default settings.

4.3 Remote System Configuration

On Menu area, after clicking 'System Configuration' menu, there will display the entire submenu. Main function of the System Configuration contents: Device Manager, Local Configuration, Server Configuration, E-map, User Manager and Log Inquiry.

Function List

- Device Manager
- Local Configuration
- Server Configuration
- E-map
- User Manager
- Log Inquiry

4.3.1 Device manager

User could add regions, groups and devices to manage all DVS in the network. After adding regions, groups and devices, they will display on Camera Display List area



Function List

- Add Region
- Add Group
- Add Device
- Modify
- Delete

4.3.1.1 Add region

User may set regions. The regions could be an indoor environment, outdoor environment or other area.

Setting Steps:

- On System Configuration menu, click 'Device Manager' , it will display 'Device Manager' interface.
- Click  button, it will pop up 'Add Region' dialog box. Input the region name in 'Region' textbox.
- Click 'OK' button, it will display the added region on Device List box and Camera Display List area.

Notice

Before adding sub region, user needs select parent region first. If user doesn't select any region, it means adding senior region.

Parameters Configuration

Parameters and explanation of adding region refer to below table.


Parameters	Meanings	How to Set...
Region	Region name of the DVS.	Input manually. It can input 32

		characters at most.
Parent Region	Superior region of current region.	Display parameter.

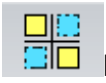
4.3.1.2 Add group

User may set camera group. The group could be some floors, rooms or other groups which installed in the DVS.

Setting Steps

- i. On 'Device Manager' interface, click  button, it will pop up 'Add Group' dialog box.
- ii. Input group name in 'Group Name' textbox which the DVS belong to.
- iii. Click 'OK' button, it will display the added group on Device List box and Camera Display List area.

Notice

When adding parent group, user must unselect any group and click  button to add.

Parameters Configuration


Parameters and explanation of adding group refer below table.

Parameters	Meanings	How to Set...
Group Name	Group name of the DVS.	Input manually. It will input 32 characters at most.

4.3.1.3 Add device

Only after adding region or group, user could add the DVS below region and group. User may select region or group every time to add the DVS. We take adding device in the region as example to describe steps.

Setting Steps

- i. On 'Device Manager' interface, select the region in Device List and click  button; it will pop up 'Add Device' dialog box.
- ii. Click 'Search Device' button, it will pop up 'DVS searching' dialog box.
- iii. Double-click the DVS in left device list to go back 'Add Device' dialog box.
- iv. Input the DVS name in 'Device Name' textbox.
- v. Select data type in 'Bit rate Type' drag-down list.

Notice

User may set data type in 'System Configuration -> Server Configuration-> Camera Configuration' after adding the DVS, referred 'Channel Configuration'. We suggest user selecting first stream in LAN and selecting "small stream" in WAN.




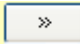
- vi. Select IP of the DVS in 'IP Address' drag-down list.
- vii. Input username and password of the DVS in 'User Name' and 'Password' textbox. The default username and password of the DVS are admin and admin.
- viii. Input the visiting port of the DVS in 'Port' textbox.

Notice

- If the DVS is in LAN, user may use the default port: 9008. If the DVS is in WAN, user need set only one port for every DVS so that the computer in network could visit the DVS.
- If the DVS is in WAN, user could modify port in 'Server Configuration->Net Configuration', referred ' Net Configuration ' .
 - ix. Click 'OK' button to display the added DVS in the Device List.

Parameters

Please refer to the following table for parameters and instructions of adding device.


- i. For the device added successfully, all channels it connecting with will display under the name of the device. Herein, we only introduce the network video surveillance server with single channel, thus the server can only connect with the one video input terminal.
- ii.  This icon denotes region or group;  it denotes device, viz. server;  it denotes channel
- iii. After added device to "device edition" box, users can add the channel in the device to the relative channel group, and then select the channel group in" channel group edition" box and click  button, and the channel will be added in the channel group. If the channel is in the recycling condition, please close live preview at first and then add the channel to the group.




Parameters	Meanings	How to set
Device name	The name of the device	Input manually, 32 characters at most
Streaming type	Net transmission type of video & audio data of server	Select at the pull-down list, selectable items: main stream and sub-stream.
IP address	IP address of the server	After searched device, select at the pull-down list.
Region name	Name of the region where the device is	System display item
User name	User name to visit server	Input manually, 19 characters at most.
Password	Password to visit server	input manually, 19 characters at most
Server terminal	Port number to visit server	Input manually, 32 characters at most.

4.3.1.4 Modify

Users can modify region names, group names, device names and channel names.

Setting Steps

- i. Modify Region
 - In camera group list, select the group and click  button, it will pop up 'Modify Group Info' dialog box.
 - Input new group name in 'Group Name' textbox.

- Click 'OK' button to modify the group name.
 - ii. Modify Group
- In camera group list, select the group and click  button, it will pop up 'Modify Group Info' dialog box.
- Input new group name in 'Group Name' textbox.
- Click 'OK' button to modify the group name.
 - iii. Modify Device
- In device list, select the device and click  button, it will pop up 'Modify Device Info' dialog box.
- Input new device name in 'Device Name' textbox.
- Click 'OK' button to modify the device name.
 - iv. Modify Channel
- In device list, select group name and click  button, it will pop up 'Modify Channel Info' dialog box.
- Input new channel name in 'Channel Name' textbox.
- Click 'OK' button to modify channel name.

Parameters Configuration

Parameters and explanations to modify region names, group names, device names and channel names refer to table below.

Parameters	Meanings	Setup
Modify region name		
Region name	Name of the region where monitor points are	Input manually, 32 characters at most
Superior region	Parent region name	System display item
Modify group name		
Group name	Name of the group where monitor points are	Input manually, 32 characters at most
Modify name		
Device name	Name of the device	Input manually, 32 characters at most
Stream type	Net transmission type of video & audio data	System display item
IP address	IP address of the server	System display item
Region name	Name of the region where the device is	System display item
User name	User name of the server to visit	System display item
Password	password of the server to visit	System display item
Terminal server	Terminal number of the server to visit	System display item
Modify channel name		
Channel name	Channel number in the device	System display item

Channel name	Channel name in the device	Input manually, 32 characters at most
--------------	----------------------------	---------------------------------------


4.3.1.5 delete

Users can delete region, group, device and channel.

Setting Steps

- i. Select the region, the group, the device or the channel needing to be deleted.



- ii. Click  button, pop up "confirm" dialogue box
- iii. Click "yes" button to delete this item

4.3.2 Local configuration

In the system configuration interface, after clicking "local configuration" submenu, in the operation area all setting tags will pop up. The setting functions of local configuration are: local basic configuration, local schedule configuration and local alarm configuration.

Function List

- Local basic configuration
- Local schedule configuration
- Local alarm configuration

4.3.2.1. Local basic configuration

The screenshot shows the 'Local Basic Config' tab selected. It contains several configuration sections:

- Live Config:** Dwell Time (10 Seconds), Snap picture number (5), Title (Device&Channel).
- Record Config:** Recycle Record (checked), Record partition table:

Partition	Free Space	Total Size
<input type="checkbox"/> C:\	9.31 G	15.68 G
<input checked="" type="checkbox"/> D:\	0.48 G	49.01 G
<input checked="" type="checkbox"/> E:\	0.80 G	49.01 G
<input checked="" type="checkbox"/> F:\	0.65 G	35.31 G

- Local Alarm Config:** Alarm Holding Time (30 Seconds), Post-alarm record (1 Minute).
- Log List Maintain:** Alarm log list save (Half a Month), Operator log save (One Week).
- Other Config:** Serial Port (NULL), Baud Rate (4800), Time (2009-4-8 9:53:52), Synchronize with PC time (checked), Synchronize button.
- Version Information:** Software Version: 1.4.1.5

In the "local basic configuration" interface, users can set live configuration, record configuration, local alarm configuration, log list maintain, other configuration, and version information.

Setting Steps

- i In the "system configuration" menu, click "local configuration" icon.
- ii The "local configuration" will pop up in the operation area.
- iii Select "local basic configuration" tag, and the "local basic configuration" interface will appear.
- iv In " preview setting" box, set display time and headline display mode of the channel at recycle play
- v In the "video setting" box, set whether to do record recycle and set save path of video files.
- vi In the "server alarm configuration" box, set alarm holding time for each alarm and post-alarm record time.
- vii In the "maintenance of journal" box, set periods to save alarm journal and operation journal.

In the "other configuration "box, set picture numbers being cut for each time, save path to store copy files and control center time.

Note:

Users can set control center time by themselves, or select the time synchronous with the computer

- viii After finished, select any other operation interface to save the setting.

Parameters

Please refer to the following table for parameters and instructions of local basic configuration.

Parameters	Meanings	Settings
Live configuration		
dwel time	set the holding time in one picture at recycle play	Select at the drag-down list, selectable items 5s、10s、15s、20s、30s、40s、50s and 1min.
Snap picture numbers	Set live picture numbers being cut each time for single channel	Select at the drag-down list, users can set up to photo 1--30 pictures
Title	Channel and device information displayed on the top of live pictures	select at the drag-down list, selectable items: none, channel name and device name +channel name
Record configuration		
Recycle recording	To set whether to continue recording to cover the earliest video file when the disc storing video files is full.	Tick off the check box in the front of " recycle record"
Record partition	set save path of video files,	Tick off the check box in the

	users can set many a discs to save video files	front of the disc.
Local alarm configuration		
Alarm holding time	.Alarm holding time after being triggered	Select at the drag-down list, selectable items 10s、20s、30s、40s、1min. and 2min.
Post-alarm Record time	Recording time after alarm being triggered	Select at the drag-down list, selectable items:10s、20s、30s、1min.、2min.、5min and 10min.
Log		
	list	maintenance
Alarm log list save	set periods to save alarm journal	Select at the drag-down list, selectable items : within one week, within half a month and within one month
Save time of operation journal	Set periods to save operation journal	Select at the drag-down list, selectable items: within one week, within half a month
Other configuration		
Serial port	Set live picture numbers being cut each time for single channel	Select at the drag-down list
Abut Rate	Set the value according to the setting of speed dome	Select the value at the drag-down list
Time	Set control center time	users can input manually(must 14 numbers) and also may select the time synchronous with computer (click " rectify" to realize)
Version information		
software version	Display software version number in the control center	System display item

4.3.2.2. Local schedule configuration



Schedule record refers to the system to record according to the fixed record time of single channel. In "local schedule configuration" interface, users can set record periods of every week and record periods in special days, viz. week schedule and day schedule.

Setting Steps

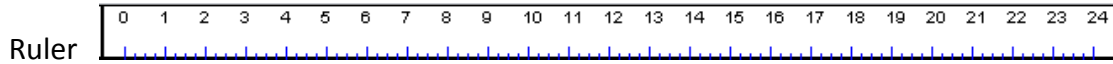
4.3.2.2.1 Week Schedule Configuration

User could set the record time from Monday to Sunday for recording everyday in one week.

- i On 'Local Configuration' interface, select 'Local Schedule Configuration' page, it will display 'Local Schedule Configuration' interface.

- ii In device list of left Operation area, select camera to set week schedule, and click  button.
- iii On 'Week Schedule' item, drag the mouse to the weekday, and drag to select the time when there is  in blank area.

Notice






means 24 hour in one day, the last graduation is 15 minutes.

After setting, user could select other interface to save the settings.

4.3.2.2.2 Day Schedule Configuration

User could set record time for recording in some time of special day, such as holiday.

- i On 'Local Schedule Configuration' interface, select camera to set day schedule in device list of left Operation area.
- ii On 'Day Schedule' item, input date which needs to set schedule in 'date' textbox, or click  near 'date' textbox to select.
- iii Click  button, move the mouse to 'Holiday' item in 'Date Schedule' item, drag to select time when there is  in blank area.
- iv After setting, user could select other interface to save the settings.

4.3.2.3. Local alarm configuration

Local alarm configuration is a kind of alarm mode of control center which is triggered by alarm after alarm input device (such as motion detection sensor, infrared sensor etc.) detects alarm information.

Setting Steps

- i In the "local configuration" interface, select "local alarm configuration" tag, and the "local alarm configuration" interface will pop up.
- ii In the "local alarm configuration" interface, select a channel in one server in the left device list.
- iii In the "alarm type" list, click to select one alarm type of the channel, e.g. "motion detection".

Note:

When to select a server in the left device list, users can do alarm linkage configuration to select the sensor connecting with device in "alarm type".

- iv In the "alarm linkage type" list, tick off alarm linkage type needing to trigger.

Note:

- alarm linkage mode: sound alarm, e-map alarm and linkage channel record

Sound alarm is control center sound "di, di" in which is triggered by alarm information when the sensor detects alarm. Sound alarm can be triggered by sensor alarm, motion detection or video loss.

E-map alarm is that alarm information triggers the alarm input device which is opposite to the scene in the e-map to alarm by blinking. After setting alarm link of

alarm information and e-map alarm, users should set the relative camera of alarm link in the e-map and map configuration. For further details, please refer to chapter "set camera"

Linkage channel record is that alarm information triggers the channel to record when the sensor detects alarm. After setting up linkage channel record, if users need to modify alarm time and record time, please refer to "local basic configuration" to modify. Linkage record alarm may be triggered by sensor alarm or motion detection alarm.

- After set the mode of alarm, users need to set alarm input and relative alarm output data in the "server alarm configuration" interface of the menu" local configuration".
- v After finished, select any other interface to save the setting.

4.3.3 Server Configuration

Please refer to the user's manual of DVR or DVS, which is packed in the box with the device.

4.3.4 E-map

In the menu region, click "e-map", and the setting function will appear in the operation region. The setting functions of e-map are map configuration and map alarm.

E-map is a plan which is to simulate pictures in the scene. In the e-map, users can add or delete camera at the position which is opposite to the scene as well as set e-map alarm.

Function List

- Map configuration
- Map alarm

4.3.4.1 Map configuration

In the interface of "map configuration", users can add or delete e-maps, modify map names, and set whether to start map alarm function.




Functions List

- Add maps
- Add brother nodes
- Add sub nodes
- Modify map names
- Delete sub nodes
- Set camera
- Change icon
- Delete camera

4.3.4.1.1 Add maps

Users can add many e-maps in the map adding area.



Setting Steps

- i. In the " system configuration" menu, click  " e-map" icon
"E-map" interface will pop up in the operation region.
- ii. In the "e-map" interface , click "map configuration"  button, and then right-click in the "map" tree, quick menu will pop up.
- iii. In the quick menu, select "add map", and the dialogue box to add map will pop up.
- iv. Input name of the map at the text box " name"
- v. In the "path" box, click  button, and the "open" dialogue box will pop up.
- vi. Select the save path of e-map, and click "open" button to confirm path.
- vii. Click "confirm" button to add e-map in control center successfully.

4.3.4.1.2 Add brother nodes

Users can add e-maps which is parallel with the previous map.



Setting Steps

- i. In the " e-map" interface, click  " map configuration " button, and then right-click the added map in "map" tree, the quick menu will pop up.
- ii. In the quick menu, please select "add brother nodes", a dialogue of "add map" will pop up.
- iii. Input name of the map at the text box of "name".
- iv. In the "path" box , click  button, and the " open" dialogue will pop up.
- v. Select the path to save e-map, and click "open" button to confirm the path.
- vi. Click "confirm" button to add map in the map control center successfully.

4.3.4.1.3 Add sub nodes

Users can add sub nodes in the previous maps.


Setting Steps

- i. In the " e-map" interface, click " map configuration "  button, and click the added map in the" map" tree with the right key of the mouse, and a quick menu will pop up.
- ii. In the quick menu, select "add sub node", " add map "dialogue will pop up.
- iii. Input the name of the map at the text box of "name"
- iv. In the " path " box, click  button, " open" dialogue will pop up.
- v. Select the path to save e-map and click "open" button to confirm the saving path.
- vi. Click "confirm" button to add map in the map control center successfully.

4.3.4.1.4 Modify map names


Users can modify e-map names.

Setting Steps

- i. In the “e-map” interface, click “map configuration”  button, and then right-click the added map in the " map" tree, and a quick menu will pop up.
 - ii. In the quick menu, select "modify sub node names", the dialogue of "modify map name" will pop up.
 - iii. Input the name of the map at the text box of "name"
 - iv. Click "confirm" button to modify the e-map name successfully.
- 4.3.4.1.5 Delete sub nodes

Users can delete e-maps.

Setting Steps

- i. In the “e-map” interface, click “map configuration”  button.
 - ii. In the “map" tree, select the map needing to delete and then right-click, a quick menu will pop up.
 - iii. In the quick menu, select “delete node”, the "confirm" dialogue will pop up.
 - iv. Click "yes" button to delete the map.
- 4.3.4.1.6 Set camera

Users can set a camera in the e-map where is opposite to the live.

Setting Steps

- i. In the “e-map” interface, click “map configuration” button.
- ii. In the “map” tree, select the map to add camera.
- iii. Select a channel in the server at the left device list of control center, drag the channel into the e-map where is opposite to the live.


Note:

- In this way, the channel in the server will connect with camera.
- After set the camera, users can click button to select the relative map, and then select the camera in the map to click right key to watch live pictures.

4.3.4.1.7 Change icon

Users can change camera icon according to the type of camera connected with in the live,


Setting Steps

- In the "e-map" interface, click "map configuration"  button.
- i. Select the camera needing to change icon in the e-map and click right key of the mouse, and a quick menu will pop up.
 - ii. In the quick menu, select "change icon", and the dialogue "change icon" will pop up.
 - iii. Select the type of camera at the "icon" box
 - iv. Click “confirm” button to change the icon of the camera successfully.

4.3.4.1.8 Delete camera

Users also can delete the camera according to their specific requirement.


Setting Steps

- i. In the “e-map” interface, click “map configuration ”  button.
- ii. Select the camera needing to change icon in the e-map and then right-click mouse, a quick menu will pop up.
- iii. In the quick menu, select "delete", and “confirm" dialogue will pop up.
- iv. Click "yes" button to delete the camera successfully.

4.3.4.2 Map alarm

Map alarm refers to the camera in the map will blink to alarm after receiving the alarm information which is detected at the live. It is necessary for the user to set the link of camera and alarm type in “local alarm configuration" of” local configuration in the system configuration and set the schedule of camera alarm type in “server alarm configuration in “remote configuration".

Setting Steps

- i. In the “e-map" interface, click “map alarm”  button.
- ii. Select e-map in the “map" tree.
- iii. Select the camera which is blinking to alarm and then right-click the mouse and the window of live pictures will pop up.
- iv. Click “Exit" button to exit the window of the live pictures.

4.3.5 User Manager

For the administrator, they have the right to add common users and set server menus that they have right to visit.

Notice:

The administrator can add users to visit one server at user configuration of remote configuration in system configuration; and also the administrator can add users to operate one control center and visit some channel in a server at “user administration" of system configuration.



Function List

- Add user
- Set authorization
- Modify password
- Delete users

4.3.5.1 Add user

For the users added successfully, they can operate control center in the range of authorization which is endowed by the administrator. But, for the common user, they can only modify their password in the menu of "user administration" in” system configuration".

Setting Steps

- i. In “system configuration” menu, click  “user administration” button, and the "user administration" interface will appear in the operation region.
- ii. Click “add user”  button, and the dialogue of "add user" will pop up.
- iii. Input user name and password for common user in the text boxes of "user", "password" and "confirm", respectively.
- iv. Click "confirm" button to add user successfully.

Parameters

Parameters	meanings	Settings
user name	User names that user logs in control center.	Input manually, 32 characters at most
Password	Password for user to log in control center	Input manually, 32 characters at most
User class	The right class of the user which can be classified	System display item
Confirmed password	The password for users to log in control center. Note: Confirmed password must accord with the password	Input manually, 32 characters at most

4.3.5.2 Set authorization

After added user, the administrator can set common user's authorization.


Setting Steps

- i. In the “user administration" interface, select the user needing to modify operation authorization at the user list.
- ii. In the authorization list, select the menu authorization to impart it to the user.
- iii. After finished, select any other operation interface to save the setting.

4.3.5.3 Modify password

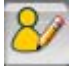
Administrator can modify their password, and also can reset common user's password to resume it as default password. The following will introduce the steps to modify their own password.

Setting Steps

- i. In the “user administration” interface, click “modify”  button, and the dialogue box of "modify password" will pop up.
- ii. Input present password at the text box of "password".
- iii. Input new password at the text boxes of "new password “and" confirmed password".
- iv. Click "confirm" button to modify user password successfully.

Note:

When the administrator to reset common user's password, he/she should do as

followings: Firstly select the user at the user list, click " modify"  button, and then click "yes" at the popped dialogue box.

Parameters


Please refer to the following table for parameters and instructions of modification of user password.

Parameters	Meanings	Settings
User name	The user name for logging on control center	System display item
Password	The password for user to log on control center	Input manually, 32 characters at most.
New password	New password for user to log on control center	Input manually, 32 characters at most
Confirmed password	New password for user to log on control center Note: Confirmed password must be accord with new password	Input manually, 32 characters at most

4.3.5.4 Delete users

The administrator has the right to delete common users.


Setting Steps

- i. In the "user administration" interface, select the user needing to delete at the user list.
- ii. Click "modify"  button, and the dialogue box of "confirm" will pop up.
- iii. Click "confirm" button to delete the user successfully.

4.3.1 Log Inquiry


User can inquire menu operation log and alarm log as well as other operation logs. The following will take alarm log inquiry as an example to illustrate.


Setting Steps

- i. In the "system configuration" menu, click "log inquiry"  icon, and the "log inquiry" interface will appear in the operation region.
- ii. Select " alarm type" at the pull-down list of " log type"
- iii. Select alarm information type at the pull-down list of " alarm type"
- iv. Click button at the side of "start" , and then select the journal and date at the popped calendar box.

Note:


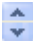

Users can only inquire the journal limited in the current day.

- v. Click  icon, and the dialogue box of "select channel" will pop up.
- vi. Tick off the check box in the front of the channel to inquire journal.
- vii. Tick off whether to inquire other journals.
- viii. Click "confirm" button to return "journal inquiry " interface.

ix. Click  button, and the inquired journal will display at the interface of "log inquiry".

Parameters

Please refer to the following table for parameters and instructions of journal checking.

Parameters	Meanings	Settings
Journal type	The type of the inquired journal belonging to	Select at the pull-down list, selectable items : alarm type, operation type and all types
Alarm type	The type of alarm journal	Select at the pull-down list, selectable items; all alarm, motion detection alarm, video loss alarm and sensor alarm.
Operation type	The type of operation journal	Select at the pull-down list, selectable items: all operation, PTZ control, user configuration, playback, backup, network preview, video parameter setting, monitor point setting, local configuration, remote configuration and e-map.
Start time	The start time to inquire journal	Click  button at the time box of Start, and select the date to check journal at the popped calendar, and then input manually the time to inquire or click  button to select time.
End time	The end time to inquire journal	Input the time to inquire journal at "end time" box or click  button to select time.

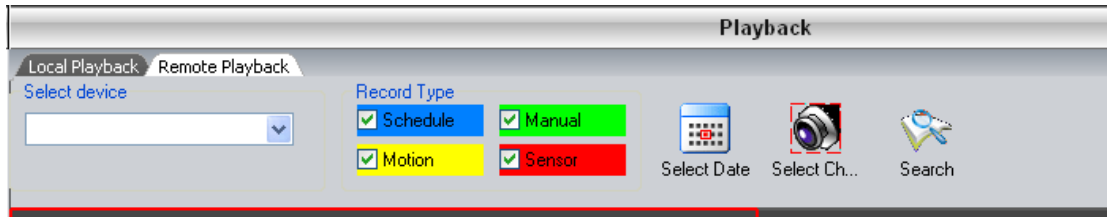
4.4 Video Search

In the menu zone, after clicking "video index", all submenus will appear in the menu zone. The main functions of video search are video playback and video backup.

Function List:

- Video playback
- Video backup








4.4.1 Video playback



Users can play back video files in a channel within a fixed playback period set in the control center. At playback, users can select four channels simultaneously at most. This system supports local playback and remote playback. The local playback is to play the files in the local, and the remote playback refers to play the files in the remote DVR, which is much more convenient to operate. Although these two types playback are different from the path of record files, they have the same settings and other operations.





Please use buttons in the table 1 to view record at playback.

Table 1 Buttons instructions for playing back

Serial number	Buttons	Meanings
1		Play button. After searched record files, click this button to play record files
2		“Suspend” button. When playing, click this button to stop playing
3		“Stop” button。 When playing or suspending, click this button to stop playing
4		“Playing speed” button. When playing, click this button and select playing speed at the pull-down menu, selectable speed : 1/4X, 1/2X, 1X, 2X and 4X.
5		“Next frame” button, when suspending, alter present channel to big picture mode, and click this button to play files by single frame.
6		Fence。 After searched record files, drag the fence to the period of playing to play the file. Click “ ” on the fence to amplify or shrink the precision of time scalar
7		Drag mouse here, all searched information list will pop up. Double-click record file in the list to play back the file in the channel in big picture mode.

Setting Steps

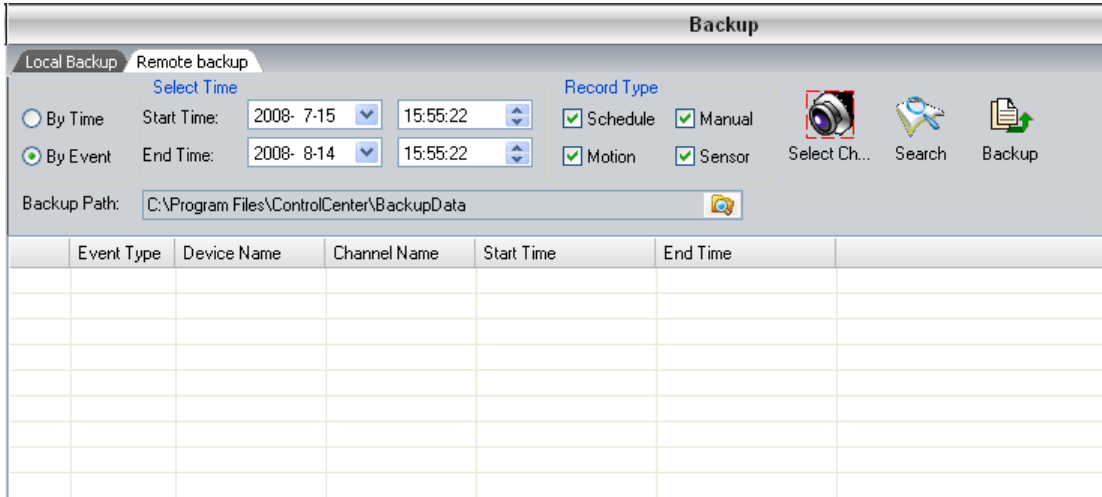
- i. In the “system configuration” menu, click “record playback”  icon,

- ii. Input the type of the playback record file at "record type" box.
- iii. Click  button, select the date of playback record at the popped calendar.
- iv. Click  button, tick off the channel to play back record at the popped dialogue box" select channel".
- v. Click  button, the record file will display automatically at the scalar in operation zone.
- vi. Drag fence to the playing period, and click "Δ" to amplify the precision of time scalar.
- vii. Click  button, or drag fence to begin playing record file.

Note:

The basic precision of time scalar is 15 minutes and the range of scalar is 0-24 which denotes 24 hours in a day respectively; click"" to amplify scalar precision to 1 minute. The scalar range is 0-60 which denotes every minute in one hour.

4.4.2 Video backup





Users can copy files within some period in the channel of the server according to time or events. There are two types backup: local backup and remote backup. The former is to copy the files in the local and the latter is to copy the files from the remote DVR. They have the same operations. For the specific setting, please follow the above interface.


Setting Steps:

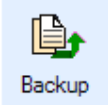
4.4.2.1. Backup by Time

When backing up record files by time, user just needs to set start time, end time and cameras.

- i. On 'System Configuration' menu, click 'Backup' , it will display 'Backup' Interface on Operation area.
- ii. Click radio-button before 'By time' to backup the record files by time.
- iii. Click  button near the Start Time and End Time, and then select time when user wants to backup in popped calendar.

Notice: The End time must more than the Start Time.


- iv. Click  button, it will pop up 'Select Camera' dialog box.
- v. Select the check-box before the cameras.
- vi. Click 'OK' button to go back 'Backup' Interface.

- vii. Click  button to begin searching and backing up the record files.

Notice: Folder of backup the record files needs user configuration in 'Other Configuration' of 'System configuration->Local configuration->Local Basic Configuration'.

4.4.2.2. Backup by Event



When backing up the record files by event, user needs to set start time, end time, record type and cameras.

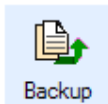
- i. On 'System Configuration' menu, click 'Backup' , it will display 'Backup' interface on Operation area.
- ii. Click radio-button before 'By Event' to backup the record files by event.
- iii. Click button near the Start Time and End Time, and then select time when user wants to backup in popped calendar.

Notice: The End time must more than the Start Time.

- iv. Select the type of record files in 'Record Type' item.

Notice: Record types' content: Schedule, manual, motion and sensor.

- v. Click  button, it will pop up 'Select Camera' dialog box.
- vi. Select the check-box before the cameras.
- vii. Click 'OK' button to go back 'Backup' Interface.
- viii. Click  button to search the record files.
- ix. In the record files list, select the check-box before the record files which need to backup.

- x. Click  button to backup the files.

Notice: Folder of backup the record files needs user configuration in 'Other Configuration' of 'System configuration->Local configuration->Local Basic Configuration'.