

SVC400 CONFIGURATION GUIDE

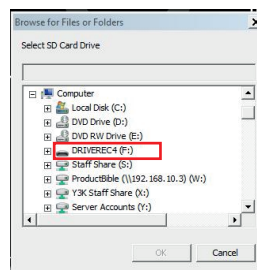
The following steps explain how to configure the SVC400 to record or disable channels.

Please make sure you connect the same number of cameras as you have activated in the settings (Step 4), otherwise the unit will beep and not record.

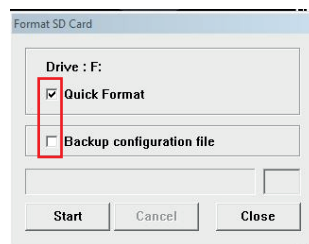
1. Firstly, initialize your new SD card (if your card is already configured please skip to step 4). To do this, please open the SVC400 software provided with the product, and click the [Tool] icon shown below.



2. Select SD Initialize, choose the SD card location (Below) and press OK.



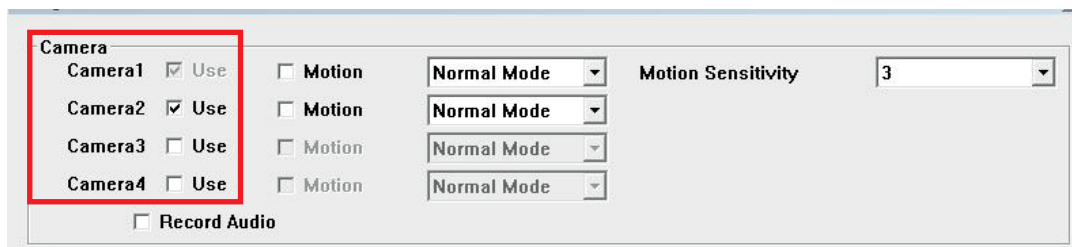
3. Next, tick the [Quick Format] button, un-tick the Backup configuration file and click the [Start] button.



4. Once the SD Card has been formatted, click on the hammer icon to open up the configuration settings page.



5. To select the camera inputs you wish to use, check the corresponding numbered box shown below.



6. If you wish to use 2 cameras on the unit, configure the SD card as above with Camera 1 and 2 ticked. The user can select any combination of cameras to record, however please note you cannot disable the 1st camera.
7. Once the desired inputs have been chosen, click [OK]. To save the settings, click [OK] when prompted to "Save current setting".
8. You can now safely remove the SD card from your computer via the "Safely Remove Hardware" icon. Now it is ready to insert into the SVC400.