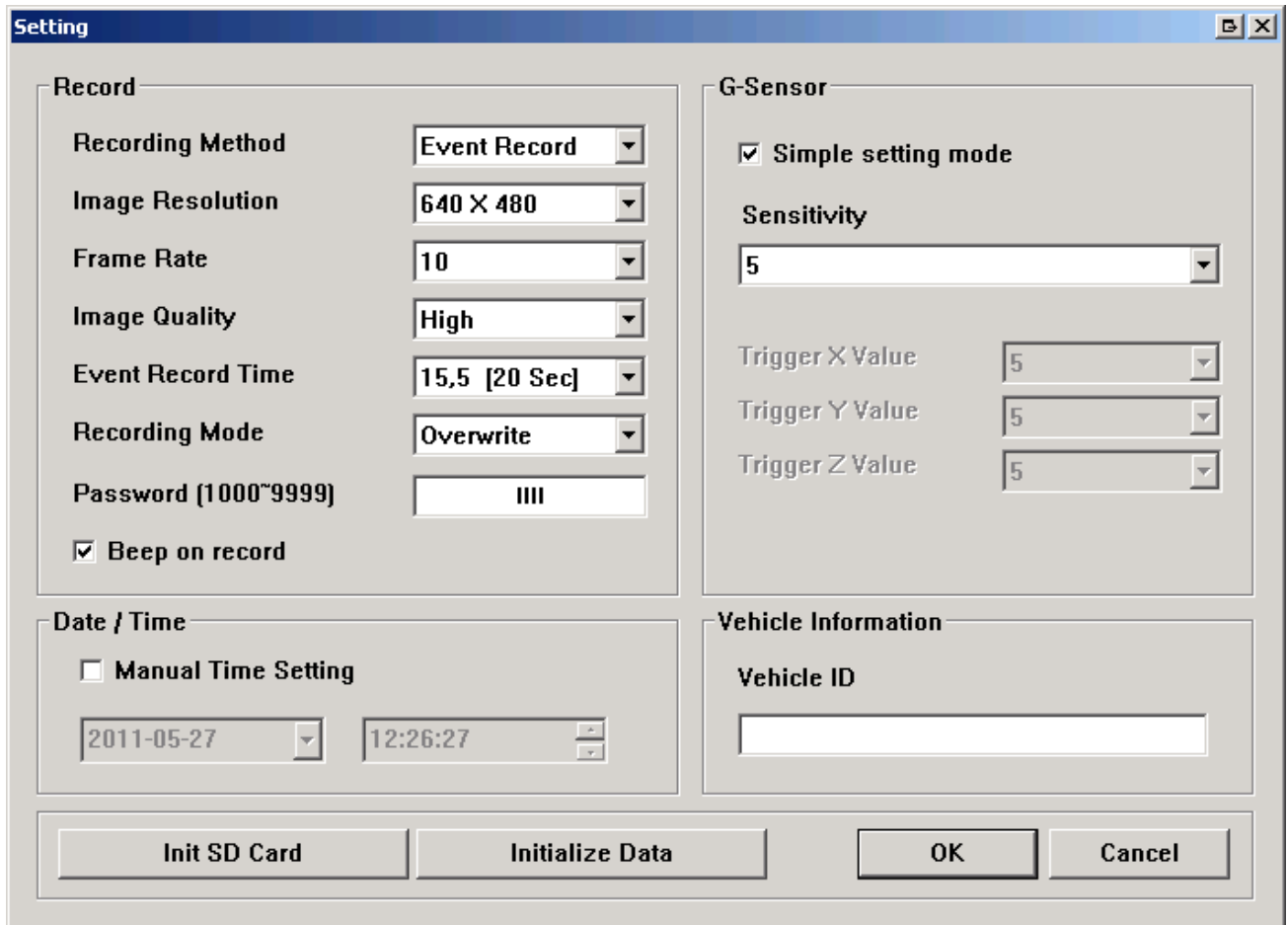


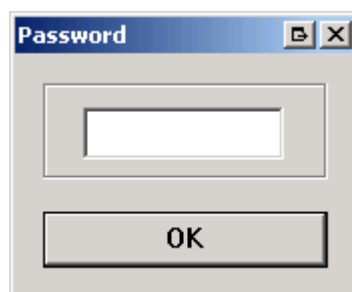


On the device settings page you should now see an option to enter a password. This password must be a set of 4 numbers between 1000 and 9999.

Enter your desired password and then click *OK*. It will then prompt you to enter the password again to confirm it.



Once you have done this the password is now set, when you try to enter the settings or view recorded footage it will now prompt you for this password.



If you have any issues please feel free to contact our technical support line on 0871 222 1430